



Roscommon County
Development Plan
2021-2027

Renewable Energy Strategy

Proposed Material Alterations to the Draft Plan

Your County

Your Plan

Your Future



Comhairle Contae
Ros Comáin
Roscommon
County Council





Contents

1. Introduction	2
1.1 Proposed Amendments / Material Alterations to the <i>Renewable Energy Strategy</i> of the <i>Draft Roscommon Development Plan 2021-2027</i>	2
1.2 Document Format.....	2
2. Proposed Amendments	3
3. Appendix 1	7

1. Introduction

1.1 Proposed Amendments / Material Alterations to the *Renewable Energy Strategy of the Draft Roscommon Development Plan 2021-2027*

The proposed amendments / material alterations detailed in this document pertain only to the *Renewable Energy Strategy of the Draft Roscommon County Development Plan 2021- 2027*. Please refer to the accompanying *Introduction* document for details of this stage of the plan preparation process and information on how and when to make submissions / observations on the proposed amendments / material alterations.

The proposed amendments / material alterations to the *Renewable Energy Strategy* should be read in conjunction with the proposed changes set out in Volume I and Volume II of the Draft Plan, and the *Record of Protected Structures*.

1.2 Document Format

All proposed amendments / material alterations are included in the order of Chapters in the Strategy, with each proposed change being assigned a unique reference number. The original location in the *Draft Roscommon County Development Plan 2021-2027* is referenced where applicable (references to page numbers are to the Draft Plan page number).

Proposed changes to the text of the Draft Plan are displayed in the following format:

- Proposed new text is identified in green.
- Proposed text omissions from the Draft Plan are identified by a single red line ~~strikethrough~~.

2. Proposed Amendments

Proposed Amendment MA172		
Section	Heading	Page
2.5	Renewable Energy Strategy – Strategic Aims	10

Include the following Strategic Aim in Section 2.5 (Renewable Energy Strategy – Strategic Aims) of the Strategy.

RES AIM 13 - That wind turbine developments should only be considered at a minimum distance of 10 times the height of the turbine from residences, schools etc.

Proposed Amendment MA173		
Section	Heading	Page
2.5	Renewable Energy Strategy – Strategic Aims	10

Include the following Strategic Aim in Section 2.5 (Renewable Energy Strategy – Strategic Aims) of the Strategy.

RES AIM 14 - Bio mass and bio energy developments will not be permitted within 1.5 km of residences.

Proposed Amendment MA174		
Section	Heading	Page
3.1	Opportunities	12

Include the following additional text in the 2nd introductory paragraph of Section 3 (Renewable Energy in County Roscommon) in the *Renewable Energy Strategy*:

At present there is 112 MW of renewable energy being generated in County Roscommon, with the potential for 262 MW to be produced. The figure for potential generation was taken from research undertaken by the Western Development Commission and included in their report “Making the Transition to a Low Carbon Society in the Western Region” (2020). The target of potential generation capacity includes connected, contracted and ECP processed developments and future developments should include renewable energy projects put forward by Sustainable Energy Communities. While it should be noted that capacity is not available at all times, the currently connected renewable generation is well above the average county demand.”

Proposed Amendment MA175

Section	Heading	Page
6.5	Wind Energy	30

Insert the following table in Section 6.5 of the *Renewable Energy Strategy*:

Designation	Description
Most Favoured	Wind farm development will be considered favourably, subject to compliance with all necessary siting and design standards.
Less Favoured	Wind farm development will be considered, but the sensitivities revealed in these areas would render exploitation more problematic and therefore these areas are less favoured for wind energy development.
Not Favoured	Wind farm development will not be considered favourably in these areas.

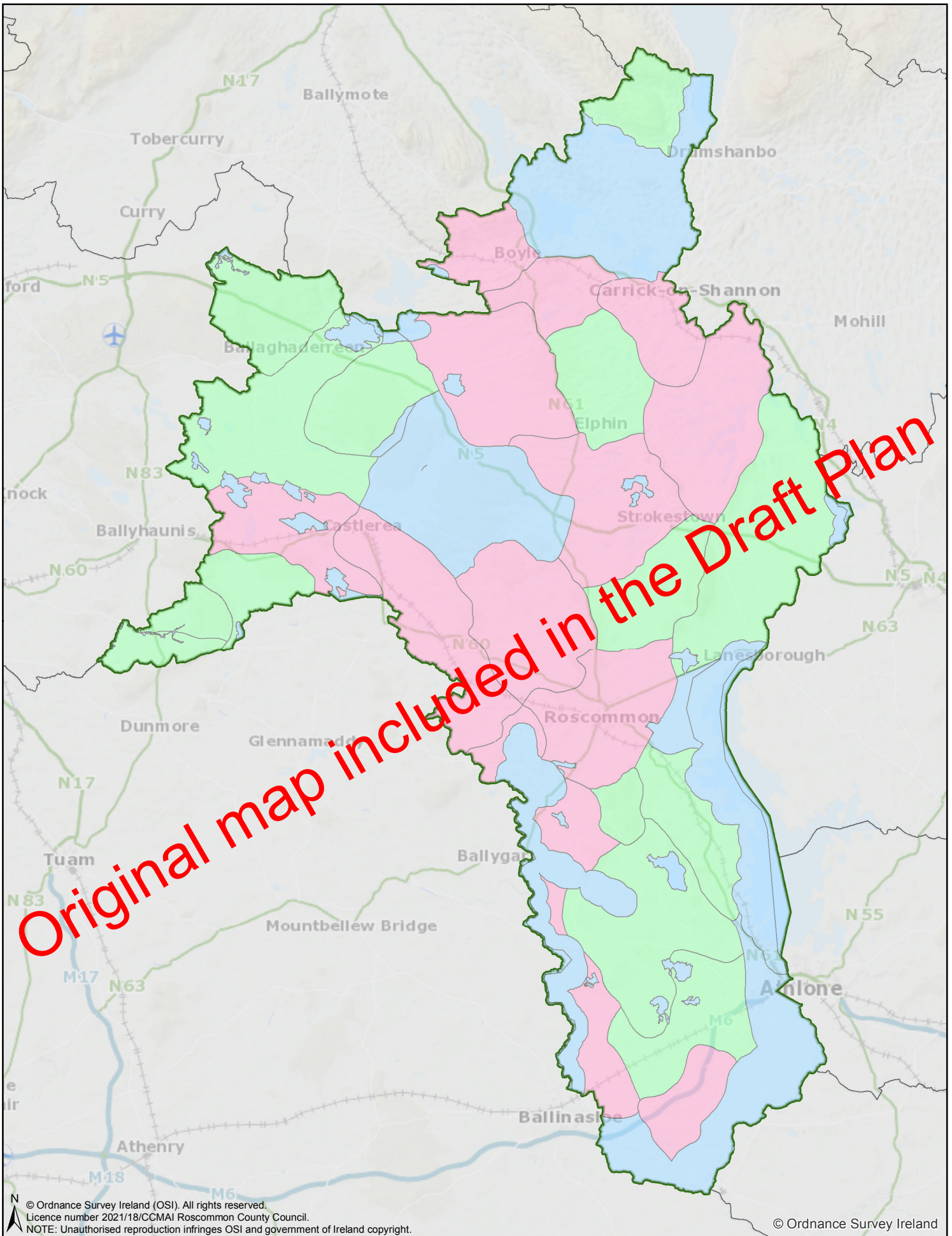
Note: Within all three areas due regard shall be taken of listed views and prospects and any development that would contravene objective NH 10.21¹ of the Plan.

Proposed Amendment MA176

Section	Heading	Page
Appendices	Appendix 1 - Maps	40

Revise Map 7 - Areas of Wind Energy to identify the Killeglan Karst Landscape area as an area “Not Favoured” for wind energy development potential.

¹ Policy objective number refers to the Draft Plan. The policy objective number will be amended to reflect changes in policy objective numbers arising from the collective proposed amendments to the Draft Plan.



© Ordnance Survey Ireland (OSI). All rights reserved.
 Licence number 2021/18/CCMAI Roscommon County Council.
 NOTE: Unauthorised reproduction infringes OSI and government of Ireland copyright.

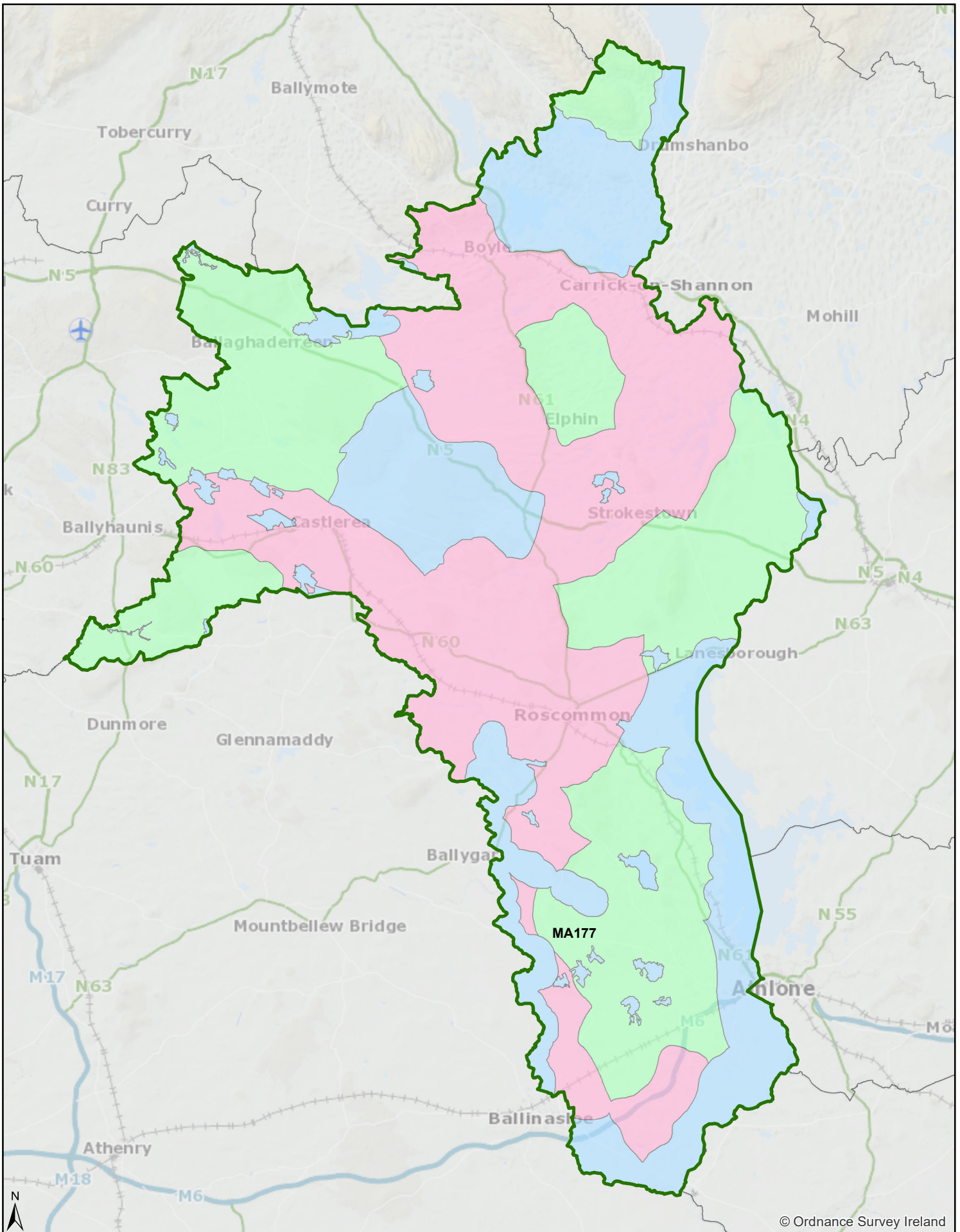
© Ordnance Survey Ireland

Legend	
Suitability	County Boundary
Less Favoured	County Boundaries
Most Favoured	
Not Favoured	

Roscommon Renewable Energy Strategy		
Map 7 Draft Areas of Wind Energy Development Potential		
Scale: N.T.S	Date: February 2021	Author: P.B.



Planning Section,
 Roscommon County Council,
 Áras an Chontae,
 Roscommon,
 Telephone: (090) 6637175
 www.roscommoncoco.ie



© Ordnance Survey Ireland

© Ordnance Survey Ireland (OSI). All rights reserved.
 Licence number 2021/18/CCMAI Roscommon County Council.
 NOTE: Unauthorised reproduction infringes OSI and government of Ireland copyright.

Proposed Material Alterations

Legend

- County Boundary
- County Boundaries


RosGISData.DBO.WindEnergy_PotentialDev Suitability

- Less Favoured
- Most Favoured
- Not Favoured

Roscommon Renewable Energy Strategy	Planning Section, Roscommon County Council, Aras an Chontae, Roscommon. Telephone: (090) 6637175 www.roscommoncoco.ie Date: November 2021 Author: P.B. Scale: N.T.S
Map 7 Areas of Wind Energy	
Roscommon County Development Plan 2021-2027	Comhairle Contae Ros Comáin Roscommon County Council

3. Appendix 1

Proposed Amendment no.	Chief Executive's Recommendation no.
MA 172	1
MA 173	5
MA 174	8
MA 175	15
MA 176	17

*  Shading identifies proposed amendments arising from a motion from an Elected Member at the Council meeting on the 16th November 2021.



Comhairle Contae
Ros Comáin
Roscommon
County Council



Roscommon County
Development Plan
2021-2027

Get involved, make a submission, keep up to date on the plan process at www.rosdevplan.ie and via Twitter [@rosdevplan](https://twitter.com/rosdevplan)

Website: www.rosdevplan.ie

In Writing: Forward Planning
Roscommon County Council
Aras an Chontae
Roscommon
F42 VR98